

How to apply for CEng, IEng or EngTech with the EI

Terry Winter – Membership Manager

April 2020



Who we are



The Energy Institute

We are the professional body for the global energy industry delivering **good practice** and **professionalism** across the sector through knowledge and skills development.

- All sectors, from upstream and downstream oil and gas to renewables and demand-side
- All disciplines, from engineers and technicians to environmentalists and energy managers

Our ambition is that energy is better **understood**, **managed** and **valued**.



How to apply

Step by step guide



- 1) Join as an Associate Member (AMEI)
- 2) Make use of the benefits and resources available
- 3) Download an application pack from EI website
- 4) Study the guidance notes
- 5) Check your qualifications (Interim Registration)
- 6) Put together your application
- 7) Application formally assessed by EI Membership Panel
- 8) Interview stage and result

El introductory membership grades

Student

For those who are studying at undergraduate, postgraduate or PhD level, or are on an apprenticeship

Join online

No assessment. Immediate access to benefits.

Associate (AMEI)

For those who are committed to working towards professional membership and gaining professional qualifications in energy

Join online

No assessment. Immediate access to benefits.

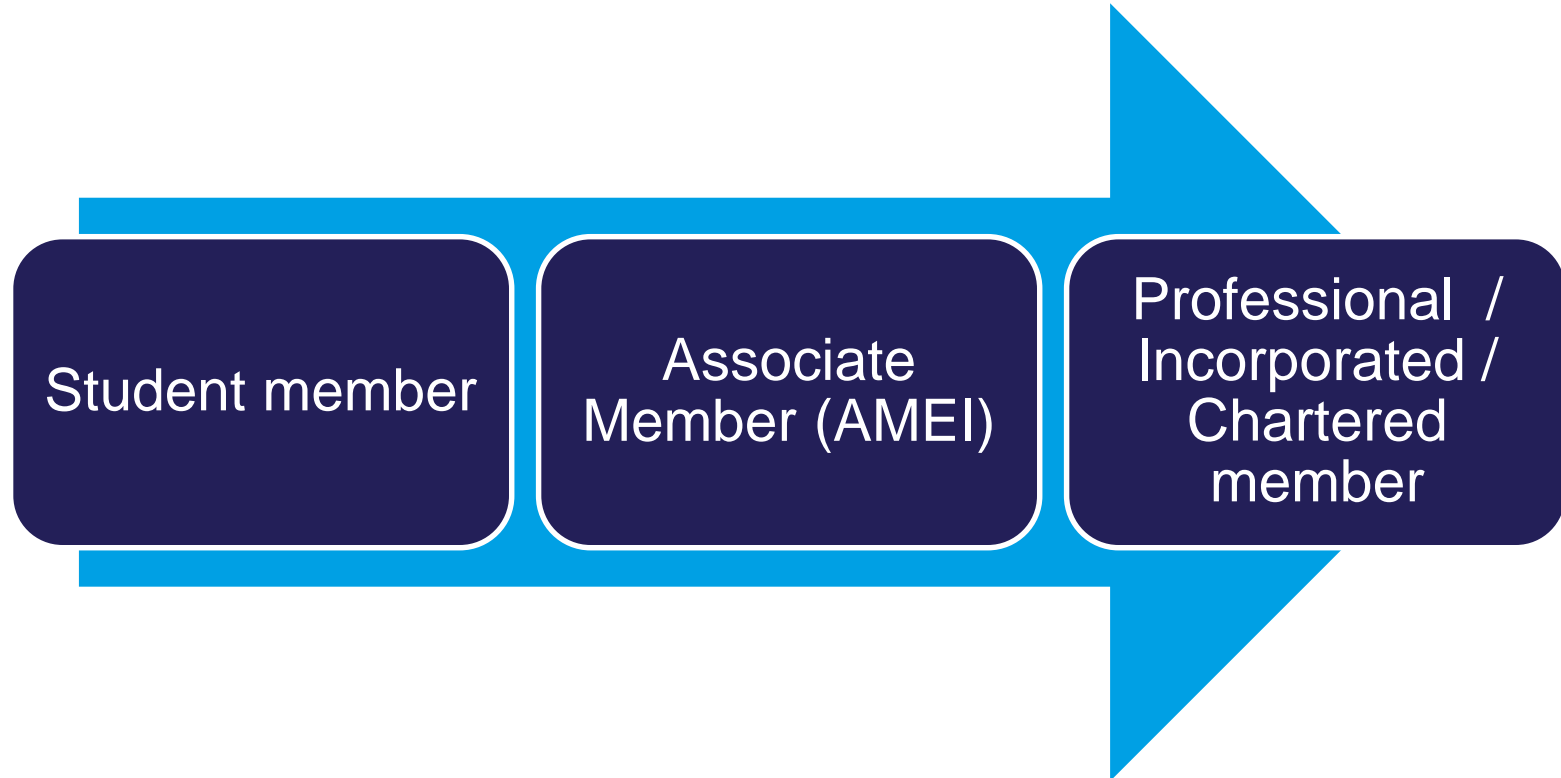
Affiliate

For those who work in, or have a general interest in energy, and would like to keep up to date

Join online

No assessment. Immediate access to benefits.

The membership journey



EI professional membership grades

Fellow (FEI)

Highest grade of membership for leaders and influencers in energy; driving profession

Management responsibilities at a senior level

Advanced knowledge of energy sector

Member (MEI)

For experienced, competent professionals working in energy

Responsible role requiring use of professional judgement and expertise

Broad knowledge of energy sector

Technician Member (TMEI)

For energy professionals who make things work at ground level

Solving practical, technical problems; may be guiding/supervising others

Good knowledge of energy sector

Professional membership grades and additional registrations

Professional membership grades

- Fellow (FEI)
- Member (MEI)
- Technician Member (TMEI)



Registered titles awarded under licence

- Chartered Engineer (CEng)
- Incorporated Engineer (IEng)
- Engineering Technician (EngTech)
- Chartered Environmentalist (CEnv)



Chartered titles unique to the EI

- Chartered Energy Engineer
- Chartered Petroleum Engineer
- Chartered Energy Manager

Professional Registrants route to MEI

- Specifically for those who are
 - already registered as a Chartered Engineer, Incorporated Engineer or Chartered Environmentalist
 - currently working in energy and have a track record of working in responsible roles in the energy sector
- Quicker, streamlined route – Application form, CV, photo ID and overview of experience in energy
- Pilot until 30 June 2020
- No application fee



Find your professional registration

Professional registration



Interim Registration (Engineer)

Interim registration certifies that you have the



Chartered Engineer (CEng)

Chartered Engineers develop solutions to engineering problems



Incorporated Engineer (IEng)

Incorporated Engineers maintain and manage

How to apply

What do you need to submit?

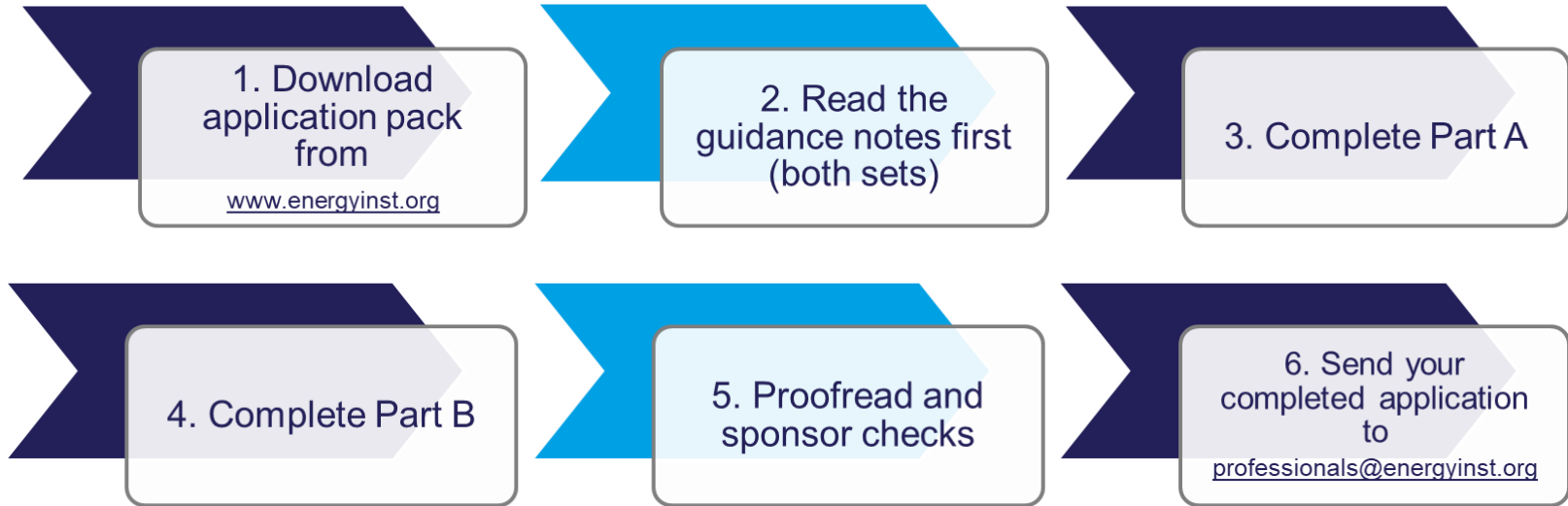
Part A

- Application form
- Two sponsor references
- Professional Development Review (PDR)
- CPD record
- Organisational chart
- Copies of academic certificates & photo ID
- Application fee

Part B

- Competence grid
 - One for each grade you are applying for

How to apply



Five core competences to demonstrate in your PDR and competence grid

A

Knowledge and
understanding

B

Application to
practice

C

Leadership and
management

D

Communication
and interpersonal
skills

E

Commitment to
professional
standards

Example of competence grid

B Apply appropriate theoretical and practical methods to the analysis and solution of energy-engineering problems.

Competence		Examples of how you meet this competence:
B1	<p>Identify potential projects and opportunities. This could include an ability to:</p> <ul style="list-style-type: none">• Establish and help develop solutions to meet users' requirements• Consider and implement new and emerging technologies• Enhance engineering practices, products, processes, systems and services• Use own knowledge of the employer's position to assess the viability of opportunities.	
B2	<p>Conduct appropriate research, and undertake design and development of engineering solutions. This could include an ability to:</p> <ul style="list-style-type: none">• Identify and agree appropriate research methodologies• Allocate and manage resources• Develop the necessary tests• Collect, analyse and evaluate the relevant data• Undertake engineering design• Prepare, present and agree design recommendations, with appropriate analysis of risk, and taking account of cost, quality, safety, reliability, appearance, fitness for purpose, security, intellectual property (IP) constraints and opportunities, and environmental impact.	

Interim Registration

- For those intending to apply for **CEng**, **IEng** or **EngTech** registration.
- Mandatory for those who do not hold accredited qualifications, either by the Engineering Council, or under an international agreement.
- Download and complete application form listing qualifications, which are then checked by EI staff.
- Accredited qualifications?

YES

Interim Registration awarded.

NO

Complete paperwork to demonstrate you meet the criteria.
Reviewed by ICP Panel.

Foundation technical knowledge skill and
understanding
(Interim registration)

+

Professional competence and commitment

CEng – Exemplifying academic qualifications

Educational standard

A Bachelors degree, with Honours, in engineering or technology, accredited for CEng, plus an appropriate and accredited Masters degree or Engineering Doctorate (EngD), or appropriate further learning to Masters level

Or an accredited integrated MEng degree



Chartered Engineer (CEng)

Profile

Chartered Engineers work in responsible roles which require new ideas and innovation. As a Chartered Engineer in energy you will often be developing solutions to engineering problems using new or existing technologies, through innovation, creativity and change. You may have technical accountability for complex systems with significant levels of risk and you will often be involved in technical or commercial leadership, requiring effective interpersonal skills.

You will need to show that you have appropriate high level technical knowledge in engineering, the know-how to apply it, and understand your responsibilities as a professional.

Chartered Engineer (CEng)

For CEng you will need:

- To meet educational standard
Interim registration if qualifications are not accredited
- Relevant practical experience
- To abide by EI Code of Conduct
- To join as a professional member
- To apply with
Chartered Energy Engineer or
Chartered Petroleum Engineer



IEng – Exemplifying academic qualifications

Educational standard

An accredited Bachelors or honours degree in engineering or technology

or a Higher National Diploma or a Foundation Degree in engineering or technology, plus appropriate further learning to degree level

or an NVQ4 or SVQ4 which has been approved for the purpose by a licensed professional engineering institution, plus appropriate further learning to degree level



Incorporated Engineer (IEng)

Profile

Incorporated Engineers are typically involved in managing and maintaining applications, working with current and developing technologies. As an IEng in energy, you could be involved in a range of types of work - engineering design, development, manufacture, construction or operation. Whatever your role, you'll have both general and specialised engineering knowledge, be able to apply existing and new technologies in energy and have the know-how to apply the appropriate theoretical and practical methods in the workplace.

You will need to show that you have appropriate foundation technical knowledge in engineering, the know-how to apply it, and understand your responsibilities as a professional.

Incorporated Engineer (IEng)

For IEng you will need:

- To meet educational standard
Interim registration if qualifications are not accredited
- Relevant practical experience
- To abide by EI Code of Conduct
- To join as a professional member



EngTech – Exemplifying academic qualifications

Educational standard

An Advanced/Modern Apprenticeship or other work-based learning programme approved by a licensed professional engineering institution

Or a qualification, approved by a licensed professional engineering institution, in engineering or construction set at level 3 (or above) in the Qualifications and Credit Framework/National Qualifications Framework for England and Northern Ireland; or at level 6 (or above) in the Scottish Credit and Qualifications Framework; or at level 3 (or above) in the Credit and Qualifications Framework for Wales



Engineering Technician (EngTech)

Profile

Engineering Technicians apply proven techniques and procedures to the solution of practical energy engineering problems. They may contribute to the design, development, manufacture, commissioning, decommissioning, operation or maintenance of products, equipment, processes or services and will have supervisory or technical responsibility.

They have the experience and know-how to work effectively and creatively within defined fields of energy technology.

Engineering Technician (EngTech)

For EngTech you will need:

- To meet educational standard
Interim registration if
qualifications are not accredited
- Relevant practical experience
- To abide by EI Code of Conduct
- To join as a professional member



Assessment process

- Initial review by EI membership team
- Formal review by EI Membership Panel
- Applications assessed by Panel members who have similar specialism
- Feedback and opportunity to address shortfalls
- Process takes 3-4 months minimum
- Interviews mandatory for professional registrations
- Remote interviews possible



Next two application deadlines

18 May 2020

27 July 2020

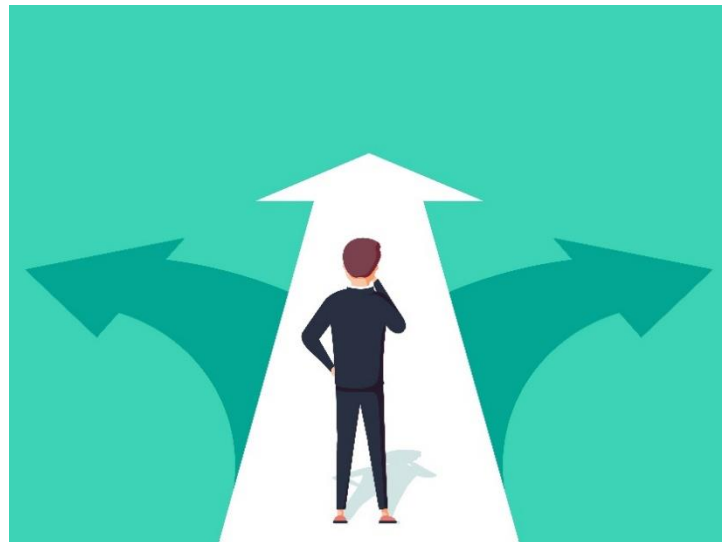
Interview process

- 45-75 minutes
- Discussion about your application, relevant knowledge and competence
- No exam or presentation
- Applicant informed of result after feedback provided to EI's Membership Panel



Next steps...

- Join and make use of the benefits and resources
- Go along to EI events, learn and network, update your CPD
- Download application pack and study guidance
- Is there an educational requirement? Check your qualifications
- Have a close look at the required competences – do a gap analysis exercise
- Get started!





Help is at hand

- **Read the guidance notes** – You have application guidance, CPD guidance and PDR/competence grid guidance all at your fingertips.
- **Talk to your sponsors** – Part of their role is to ensure your application meets the standard. They are vouching for your suitability and they have often been through the process themselves.
- **Contact the EI** – The EI membership team can be reached at professionals@energyinst.org or on +44 (0)20 7467 7100.

Thank you.

Questions?

www.energyinst.org



Follow us:
@EnergyInstitute



Join us:
Energy Institute