

How to apply for Chartered Energy Manager or Chartered Environmentalist with the EI

Terry Winter – Membership Manager

April 2020



Who we are



The Energy Institute

We are the professional body for the global energy industry delivering **good practice** and **professionalism** across the sector through knowledge and skills development.

- All sectors, from upstream and downstream oil and gas to renewables and demand-side
- All disciplines, from engineers and technicians to environmentalists and energy managers

Our ambition is that energy is better **understood**, **managed** and **valued**.



How to apply

Step by step guide



- 1) Join as an Associate Member (AMEI)
- 2) Make use of the benefits and resources available
- 3) Download an application pack from EI website
- 4) Study the guidance notes
- 5) Check your qualifications
- 6) Put together your application
- 7) Application formally assessed by EI Membership Panel
- 8) Interview stage and result

El introductory membership grades

Student

For those who are studying at undergraduate, postgraduate or PhD level, or are on an apprenticeship

Join online

No assessment. Immediate access to benefits.

Associate (AMEI)

For those who are committed to working towards professional membership and gaining professional qualifications in energy

Join online

No assessment. Immediate access to benefits.

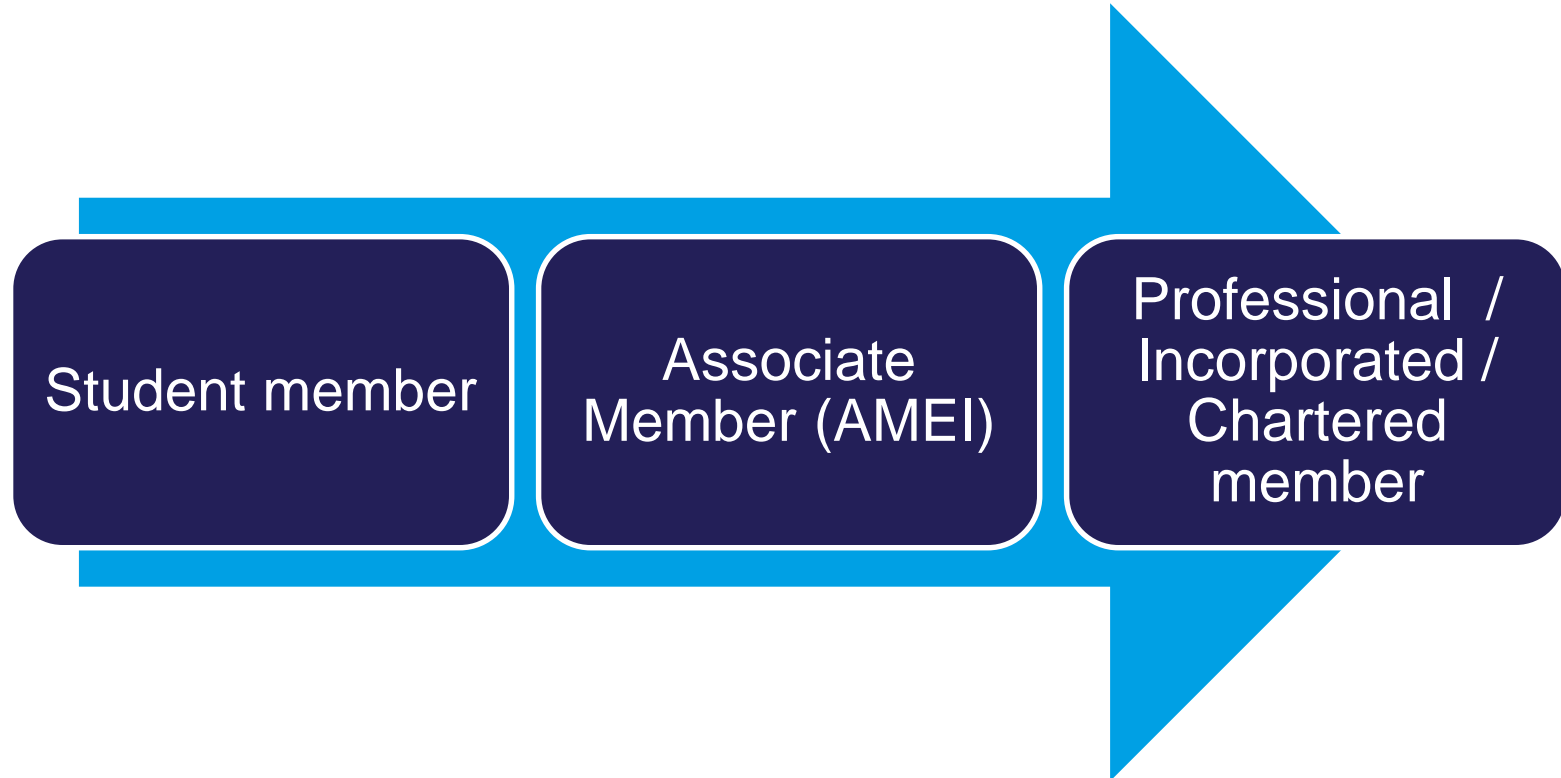
Affiliate

For those who work in, or have a general interest in energy, and would like to keep up to date

Join online

No assessment. Immediate access to benefits.

The membership journey



EI professional membership grades

Fellow (FEI)

Highest grade of membership for leaders and influencers in energy; driving profession

Management responsibilities at a senior level

Advanced knowledge of energy sector

Member (MEI)

For experienced, competent professionals working in energy

Responsible role requiring use of professional judgement and expertise

Broad knowledge of energy sector

Technician Member (TMEI)

For energy professionals who make things work at ground level

Solving practical, technical problems; may be guiding/supervising others

Good knowledge of energy sector

Professional membership grades and additional registrations

Professional membership grades

- Fellow (FEI)
- Member (MEI)
- Technician Member (TMEI)



Registered titles awarded under licence

- Chartered Engineer (CEng)
- Incorporated Engineer (IEng)
- Engineering Technician (EngTech)
- Chartered Environmentalist (CEnv)



Chartered titles unique to the EI

- Chartered Energy Engineer
- Chartered Petroleum Engineer
- Chartered Energy Manager

Professional Registrants route to MEI

- Specifically for those who are
 - already registered as a Chartered Engineer, Incorporated Engineer or Chartered Environmentalist
 - currently working in energy and have a track record of working in responsible roles in the energy sector
- Quicker, streamlined route – Application form, CV, photo ID and overview of experience in energy
- Pilot until 30 June 2020
- No application fee



Find your professional registration



Engineering Technician (EngTech)

Engineering Technicians apply proven techniques and procedures to the solution of practical engineering problems



Chartered Energy Manager

Chartered Energy Managers are professionals who manage energy in an organisation and make sure that it is used efficiently

[Read more »](#)



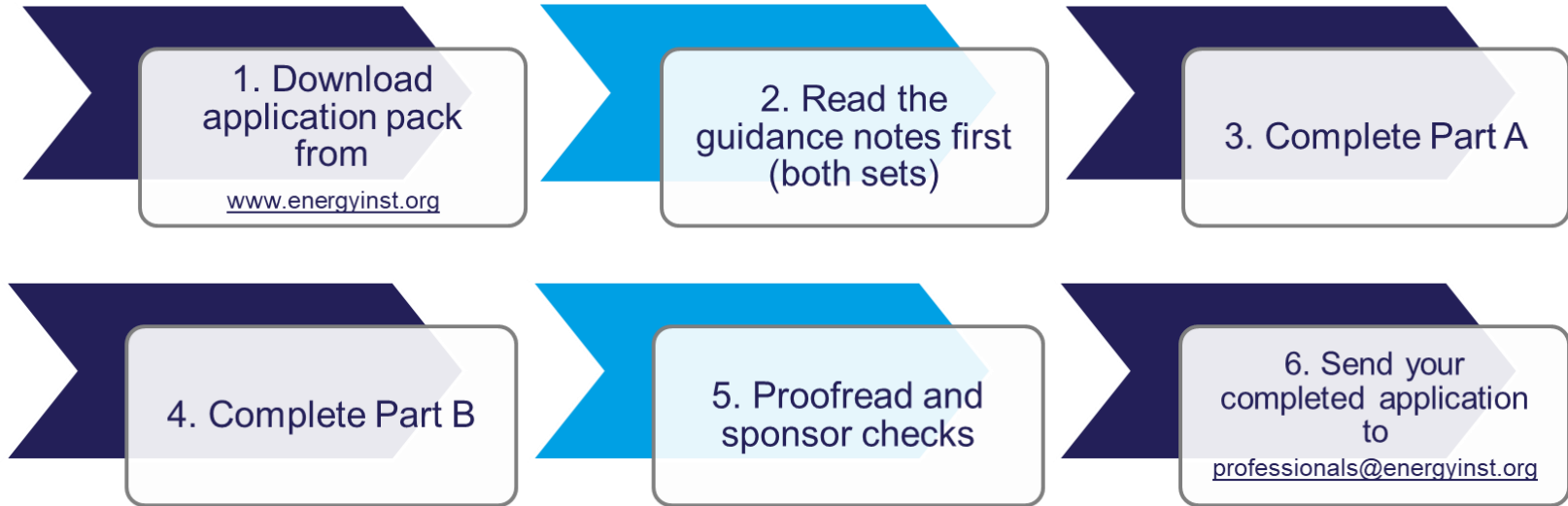
Chartered Environmentalist

Chartered Environmentalists work to mitigate and solve environmental challenges in energy, and to promote sustainability

[Read more »](#)



How to apply



How to apply

What do you need to submit?

Part A

- Application form
- Two sponsor references
- Professional Development Review (PDR)
- CPD record
- Organisational chart
- Copies of academic certificates & photo ID
- Application fee

Part B

- Competence grid
 - One for each grade you are applying for

Five core competences to demonstrate in your PDR and competence grid

A

Knowledge and
understanding

B

Application to
practice

C

Leadership and
management

D

Communication
and interpersonal
skills

E

Commitment to
professional
standards

Example of competence grid (CEnv)

B Leading Sustainable Environmental Stewardship.

Competence	Examples of how you meet this competence:
<p data-bbox="48 342 857 459">B1 Promote behavioural and cultural change by influencing others in order to secure environmental improvements that go beyond minimum statutory and regulatory requirements.</p> <p data-bbox="127 467 494 492">This could include an ability to:</p> <ul data-bbox="127 528 852 934" style="list-style-type: none">• Seek out opportunities, extend own sphere of influence and identify ways to bring about productive improvements through projects, policies or education beyond minimum statutory and regulatory demands.• Actively learn from results to improve future environmental and resource efficiency solutions in order to build best practice.• Develop and advocate good practices [best practice] to support behavioural and cultural change that promotes environmental stewardship.• Advocate environmental protection and a commitment to a more sustainable future and through persuasion, mentoring and encouraging others to contribute.	

Chartered Energy Manager

Profile

Chartered Energy Managers are experienced professionals who manage energy in an organisation and make sure that it is used efficiently. They provide advice on developing and implementing energy efficient policies.

They are not only energy experts, with wide ranging knowledge of complex issues; they are proficient communicators and change managers, helping others understand the potential of energy efficient practice, and influencing organisation policy.

Chartered Energy Manager

**For Chartered Energy Manager,
you will need:**

- Relevant practical experience
- To abide by EI Code of Conduct
- To join as a professional member

*In the UK Chartered Energy Managers
are also eligible to apply to become Lead
Assessors for the purposes of the
Energy Saving Opportunity Scheme
(ESOS)*





Energy management training



The EI offers a range of training courses and qualifications, available both online and in-class, to suit those involved in any form of energy management

- Level 1: Certificate in Energy Management Essentials
- Level 2: Energy Management Professional
- Level 3: Advanced Energy Manager
- Bespoke, in-house training
- Energy Aware
- ESOS Toolkit and training
- CPD courses and articles

Chartered Environmentalist (CEnv)



Profile

Chartered Environmentalists are professionals concerned with the environmental impacts and implications of plans, strategies and actions. They work to mitigate and solve environmental challenges in energy, and to promote sustainability.

They can be involved a range of sectors, leading teams and departments, advising government or working as hands on practitioners. They use their specialist knowledge and broader environmental understanding to apply sustainable thinking throughout their daily working life.

Chartered Environmentalist (CEnv)

For CEnv you will need:

- Relevant Masters degree or equivalent
- Relevant practical experience
- To abide by EI Code of Conduct
- To abide by SocEnv Code of Ethics
- To join as a professional member



Assessment process

- Initial review by EI membership team
- Formal review by EI Membership Panel
- Applications assessed by Panel members who have similar specialism
- Feedback and opportunity to address shortfalls
- Process takes 3-4 months minimum
- Interviews mandatory for professional registrations
- Remote interviews possible



Next two application deadlines

18 May 2020

27 July 2020

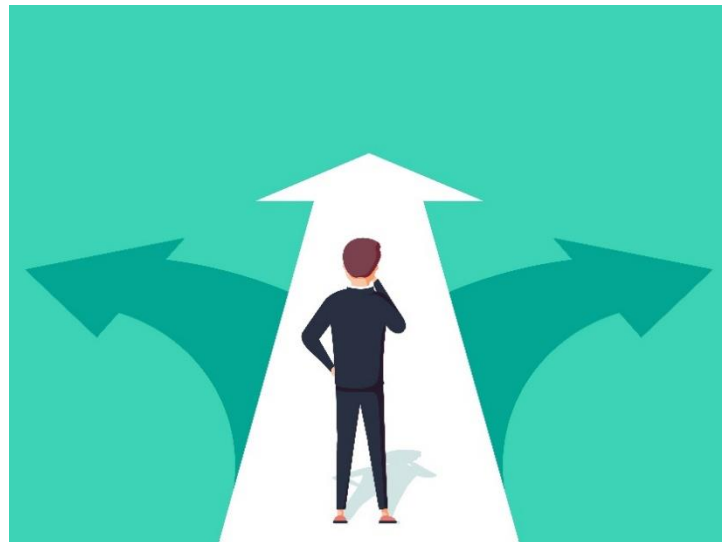
Interview process

- 45-75 minutes
- Discussion about your application, relevant knowledge and competence
- No exam or presentation
- Applicant informed of result after feedback provided to EI's Membership Panel



Next steps...

- Join and make use of the benefits and resources
- Go along to EI events, learn and network, update your CPD
- Download application pack and study guidance
- Is there an educational requirement? Check your qualifications
- Have a close look at the required competences – do a gap analysis exercise
- Get started!





Help is at hand

- **Read the guidance notes** – You have application guidance, CPD guidance and PDR/competence grid guidance all at your fingertips.
- **Talk to your sponsors** – Part of their role is to ensure your application meets the standard. They are vouching for your suitability and they have often been through the process themselves.
- **Contact the EI** – The EI membership team can be reached at professionals@energyinst.org or on +44 (0)20 7467 7100.

Thank you.

Questions?

www.energyinst.org



Follow us:
@EnergyInstitute



Join us:
Energy Institute